

G Connect Spaces



#enjoyyourspace

DESIGNING THE PERFECT CO WORKING OFFICE DESK

www.gconnectspaces.com





#enjoyyourspace

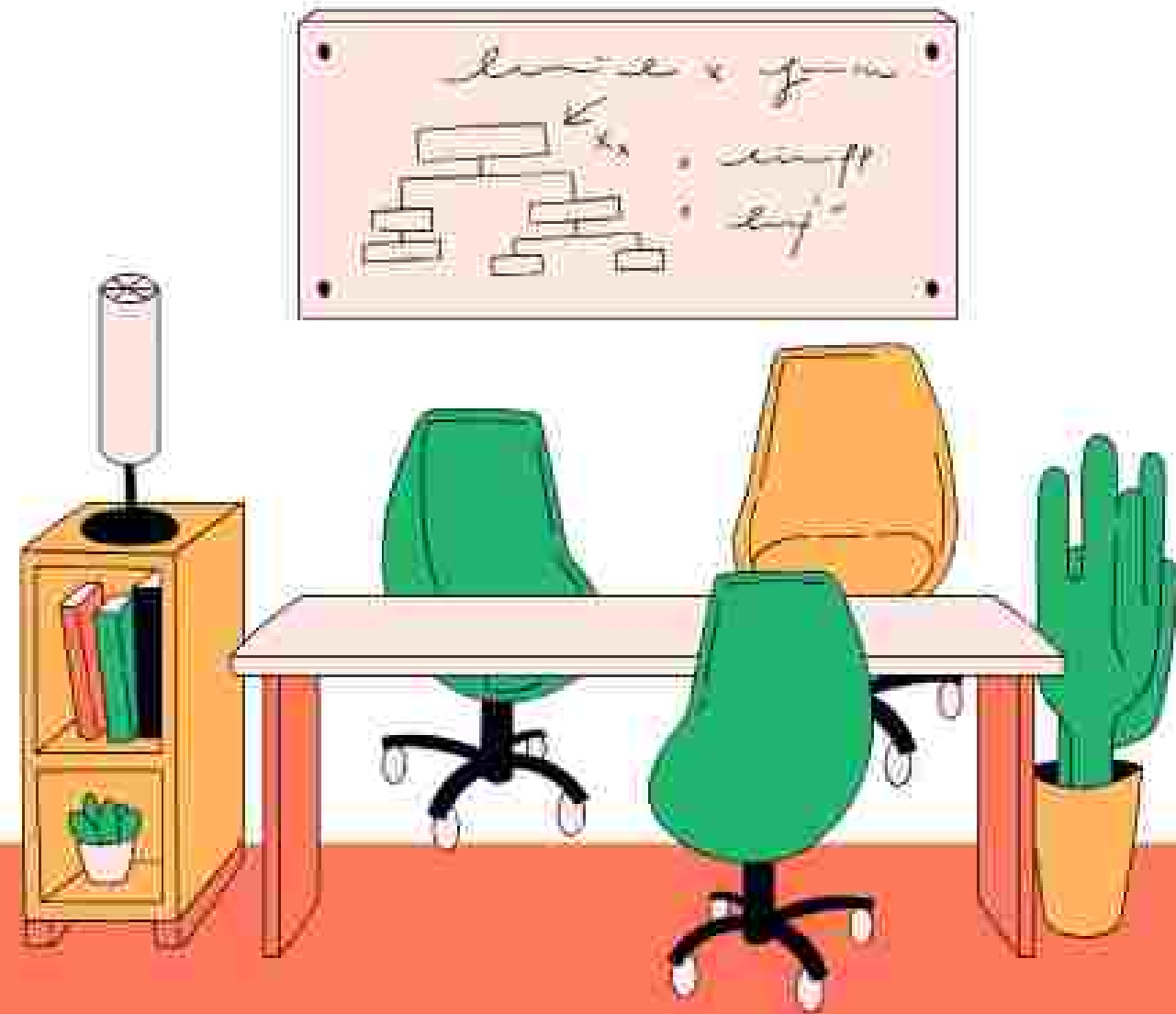
INTRODUCTION

A good co working office desk can increase productivity, comfort and collaboration in the workplace. The right design helps create an inspiring and functional work environment.



ERGONOMICS IS KEY

Ergonomics is very important in office desk design. Choose a chair that supports your back well and a table that allows for a healthy posture. Make sure the height of the table and chairs can be adjusted according to the user's needs.



#enjoyyourspace

THE RIGHT CHOICE OF MATERIALS

Table material affects aesthetics and durability. Choose materials such as wood, metal, or glass that are not only durable, but also provide a professional, modern look.





EFFICIENT STORAGE SPACE

Good storage space helps keep a desk neat and organized. Include drawers, shelves, or desk organizers to store documents, stationery, and other work equipment.

OPTIMAL LIGHTING

Good lighting is essential for eye comfort and productivity. Use natural lighting as much as possible and add a table lamp that can be adjusted in intensity.



#enjoyyourspace

INTEGRATED TECHNOLOGY



Make sure the desk has easy access to power and USB ports. it's a good idea to add a wireless charging station or cable management to reduce clutter.





FLEXIBILITY AND MODULARITY

The table's flexible and modular design allows for customization as needed. Desks that can be combined or separated provide convenience in workspace settings.



CONCLUSION

The perfect co working office desk should combine ergonomics, the right materials, efficient storage space, optimal lighting, integrated technology and warmth. With the right design, co working office desks can increase user productivity and comfort.



THANK YOU



#enjoyourspace

+91-9811166052

